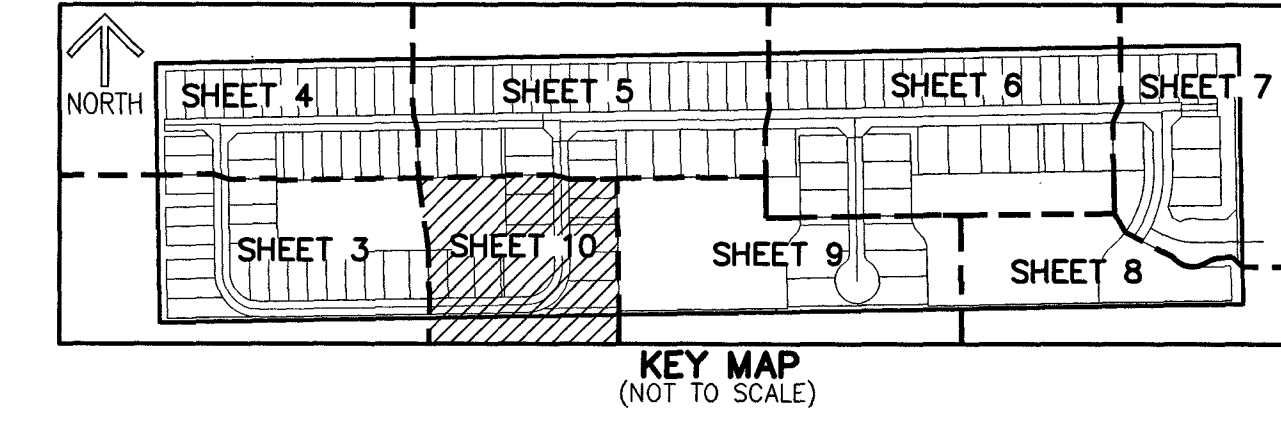


GREYHAWK LANDING

BEING A REPLAT OF ALL OF TRACTS 81 THROUGH 88, AND A PORTION OF TRACT 80, BLOCK 43, PALM BEACH FARMS COMPANY PLAT NO. 3, ACCORDING TO THE PLAT THEREOF RECORDED IN PLAT BOOK 2, PAGE 45 OF THE PUBLIC RECORDS OF PALM BEACH COUNTY, FLORIDA, SAID PARCEL INCLUDING THE NORTHERLY 15.00 FEET OF THE 30 FOOT ROAD, DITCH AND DIKE RESERVATION AREA LYING IMMEDIATELY SOUTH OF AND CONTIGUOUS WITH THE SOUTH LINE OF SAID TRACTS 81 THROUGH 88 AND A PORTION OF TRACT 80, AND ALSO THAT PORTION OF THE ROAD, DITCH AND DIKE RESERVATION AREA LYING BETWEEN SAID TRACTS 80 & 81, LYING IN SECTION 7, TOWNSHIP 45 SOUTH, RANGE 42 EAST, PALM BEACH COUNTY, FLORIDA

THIS INSTRUMENT PREPARED BY
DAVID P. LINDLEY
OF
CAULFIELD & WHEELER, INC.
SURVEYORS - ENGINEERS - PLANNERS
7900 GLADES ROAD, SUITE 100
BOCA RATON, FLORIDA 33434 - (561)392-1991

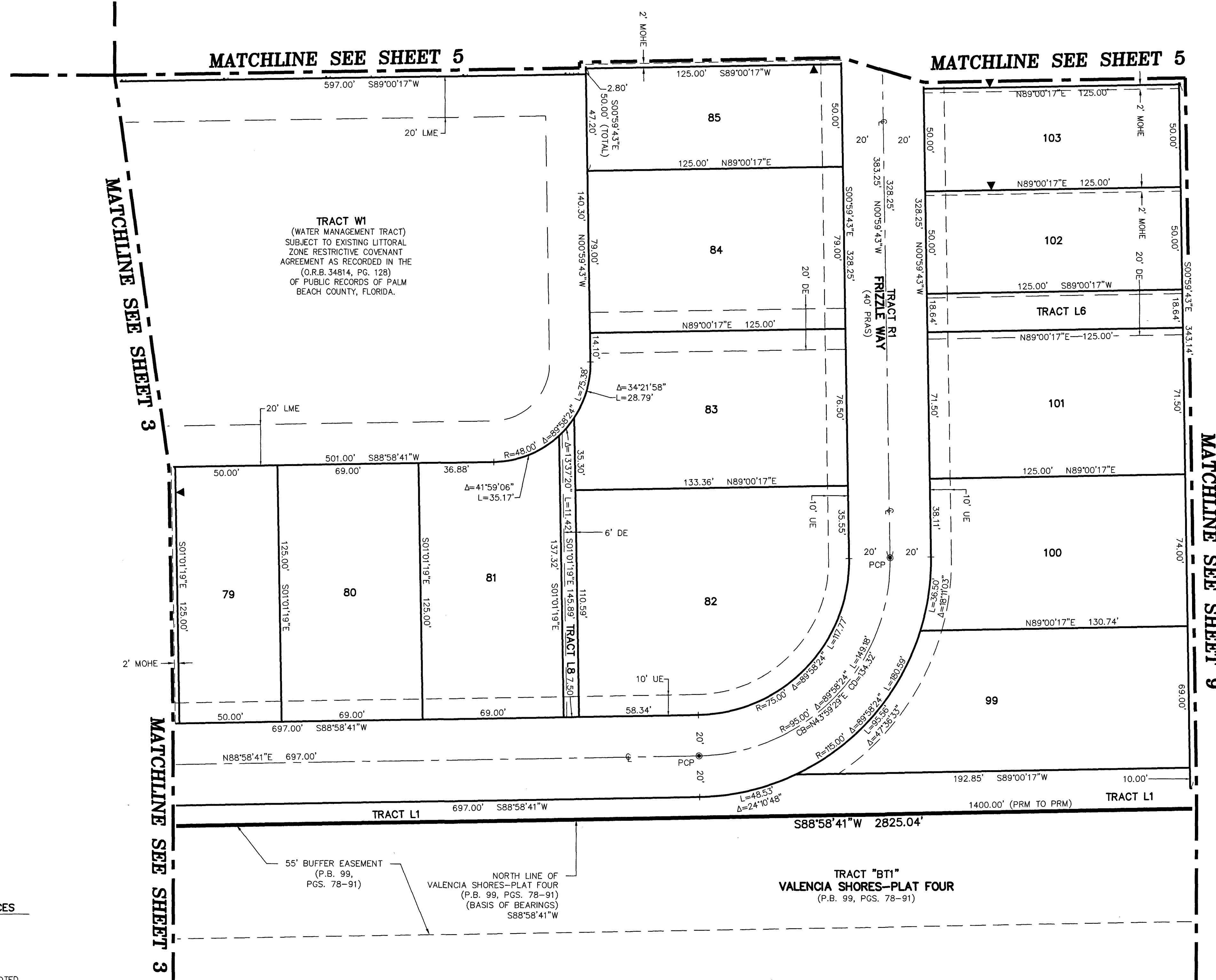


28

SHEET 10 OF 10

LEGEND/ABBREVIATIONS:

- | | |
|--|---|
| P.O.B. - POINT OF BEGINNING | PC - POINT OF CURVATURE |
| ESMT. - EASEMENT | PT - POINT OF TANGENCY |
| P.B. - PLAT BOOK | PNT - POINT OF NON-TANGENCY |
| O.R.B. - OFFICIAL RECORD BOOK | PRC - POINT OF REVERSE CURVATURE |
| PG(S). - PAGE(S) | P.U.D. - PLANNED UNIT DEVELOPMENT |
| CL - CENTERLINE | LB - LICENSED BUSINESS |
| Δ - DELTA (CENTRAL ANGLE) | (N/R) - NON-RADIAL |
| CB - CHORD BEARING | PRAS - PRIVATE RESIDENTIAL ACCESS STREET |
| CD - CHORD DISTANCE | NAD - NORTH AMERICAN DATUM |
| R - RADIUS | PRM - PERMANENT REFERENCE MONUMENT |
| L - ARC LENGTH | R/W - RIGHT-OF-WAY |
| CL - CENTERLINE | ▲ - INDICATES "ZERO" SIDE OF LOT LINE |
| E - EASTING (WHEN USED WITH COORDINATES) | ■ PRM - DENOTES SET PERMANENT REFERENCE MONUMENT 4" x 4" x 24" CONCRETE MONUMENT WITH ALUMINUM DISK STAMPED "C&W PRM LB3591" UNLESS OTHERWISE NOTED |
| N - NORTHING (WHEN USED WITH COORDINATES) | ● PCP - DENOTES PERMANENT CONTROL POINT NAIL AND METAL DISK STAMPED "PCP LB3591" |
| DE - DRAINAGE EASEMENT | |
| L.A.E. - LIMITED ACCESS EASEMENT | |
| LME - LAKE MAINTENANCE EASEMENT | |
| LMAE - LAKE MAINTENANCE ACCESS EASEMENT | |
| L.B.E. - LANDSCAPE BUFFER EASEMENT | |
| MOHE - MAINTENANCE AND OVERHANG EASEMENT | |
| PBCUE - PALM BEACH COUNTY UTILITY EASEMENT | |
| PDE - PUBLIC DRAINAGE EASEMENT | |
| UE - UTILITY EASEMENT | |



NOTES
COORDINATES, BEARINGS AND DISTANCES
COORDINATES SHOWN ARE GRID
DATUM = NAD 83 1990 ADJUSTMENT
ZONE = FLORIDA EAST
LINEAR UNIT = U.S. SURVEY FEET
COORDINATE SYSTEM 1983 STATE PLANE
TRANSVERSE MERCATOR PROJECTION
ALL DISTANCES ARE GROUND, UNLESS OTHERWISE NOTED
SCALE FACTOR = 1.0000217
GROUND DISTANCE X SCALE FACTOR = GRID DISTANCE

